

# What is a **SAFE SPACE?**



A place or an environment where **a person is respected, secured, could show and communicate their true self** where there is **genuine care, support system, sensitivity, equality, no judgment and no discrimination of one's gender, age, race, social standing, and experiences.**

A place where verbal, emotional, psychological, and physical harm is absent and where there are people who could respond properly and immediately to a person or a group's call for help.





# What is Gender-Based Sexual Harassment (GBSH)?



**Verbal, nonverbal, graphic, or physical aggression, intimidation, or hostile conduct based on sex, sex-stereotyping, sexual orientation or gender identity**, involving conduct of a sexual nature that causes or likely to cause mental, emotional or psychological distress, and fear of personal safety such as sexual harassment acts committed through nonconsensual, unwanted or uninvited sexual action or remarks against any person regardless of the motive for committing such action or remarks.

## What are the EXAMPLES?

- cursing, taunting, or persistent unwanted comments on one's appearance
- wolf-whistling and catcalling
- leering and intrusive gazing
- unwanted invitations, incessant messaging, relentless requests for one's personal details
- Physical, psychological, and emotional threats, misogynistic, transphobic, homophobic, and sexist slurs, remarks, and comments
- making offensive body gestures at someone
- stalking or cyberstalking
- touching, pinching or brushing against the body or any body part of a person
- unauthorized recording, uploading or sharing of any of the victim's photos, videos in any form of media with sexual content or any information of the victim online
- unwelcome sexual advances, requests or demand for sexual favors or any act of sexual nature that has or could have a detrimental effect on the conditions of an individual
- conduct of sexual nature and other conduct-based on sex affecting the dignity of a person, which is unwelcome, unreasonable, pervasive, and offensive to the recipient and creates an intimidating, hostile, or humiliating environment for the recipient

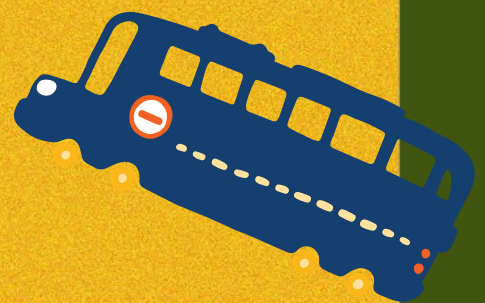




# Where can it HAPPEN?



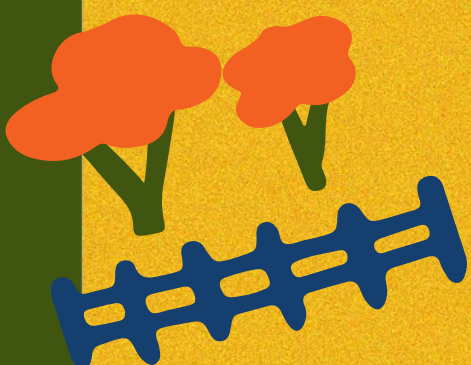
- Streets, public places, and public utility vehicles
- Online
- Workplace
- Schools



## WHO CAN commit gender-based sexual harassment?

Anyone can commit gender-based sexual harassment. This includes:

- People on the street
- Those with authority, influence or moral ascendancy such as teachers, trainers or superiors)
- Peers (such as classmates or friends)
- Subordinates (such as employees, trainees or students)





# WHAT TO DO?



## What to do IF YOU ARE HARASSED?

1. Assess the situation if it is best to confront or ignore your harasser.
2. Immediately go somewhere safe.
3. Call the attention or help of your family, friends, any teacher, school personnel, or workmate you trust.
4. File a formal complaint to the School Authorities via email: [safespaces@mc.edu.ph](mailto:safespaces@mc.edu.ph)

## WHAT DO I DO if my classmate, friend, or workmate experiences sexual harassment?

1. Provide support. Don't be a bystander if you witness someone being sexually harassed.
2. Suggest to your classmate, friend, or workmate to call the attention or help of their family member, teacher, school personnel, or workmate that they trust.
3. Inform your classmate, friend, or workmate that they could file a complaint via email: [safespaces@mc.edu.ph](mailto:safespaces@mc.edu.ph)
4. Educate yourself and learn more about the **Safe Spaces Act**.





# How does GBSH HAPPEN ONLINE?



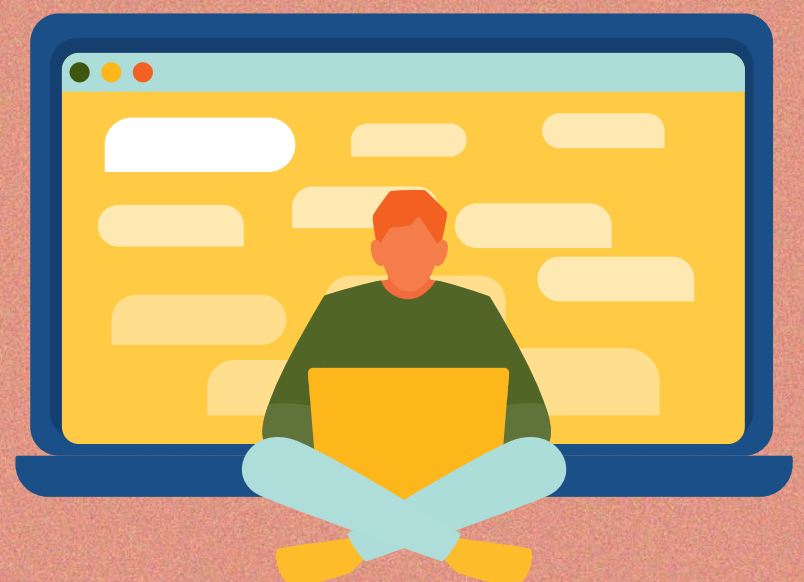
## GBSH can happen

online and be done by anyone through a variety of ways such as:

1. Cyberstalking
2. Identity theft
3. Incessant messaging through online platforms
4. Posting comments or messaging unwanted sexual remarks and comments to a person through any online platform
5. Threatening a person through private messaging, commenting, or other forms possible through any online platform
6. Uploading or sharing of one's photos, videos, and audio recordings without the person's consent
7. Filing fake online abuse reports to online platform victims

## What CAN I DO if I was harassed online?

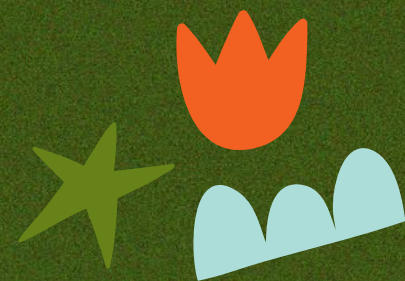
1. Block the person harassing you
2. Report profile, accounts, or users that are using your identity or are posing as you online
3. Take screenshots and other evidences of online harassment
4. Report or file a complaint to the PNP Anti-Cybercrime Group (PNP ACG)





# Could GBSH HAPPEN

in privately  
owned places?



## Yes, GBSH could happen

in places such as but not limited to malls, restaurants, resorts, movie houses, co-working/study hubs.

## What should I KNOW

about the policies and mechanisms of reporting when I am harassed in these places?

Under the Safe Spaces Act, privately owned and public spaces should have provisions of assistance such as protocols and a designated Anti-sexual Harassment Officer.

## IN SUMMARY:

Gender-based sexual harassment could be done by anyone regardless of age, sex, gender, and status and anywhere whether online, or in public or private places.

Let us be empowered and educate ourselves and others about the Safe Spaces Act so we can truly have a **SAFE SPACE** for all.

